

# **Sustainable Governance: Balancing Economic, Environmental & Social Impacts**



**Sarah Plinsky, Assistant to the County Manager  
Cindy Kemper, Environmental Department Director  
Johnson County Government  
September 19, 2008**

# Overview

- **Johnson County Basics**
- **What Is Sustainable Governance & Why Are We Promoting It?**
- **Johnson County's Sustainable Governance Model & Initiatives**
- **Questions & Answers**



# Johnson County Basics

## *Johnson County at large . . .*

- Population: 526,000 & growing by 10,000 per year
- Cities: 19 with 97% of population living in cities
- More than 50% of land incorporated
- Median household income = \$61,455 (2000)
- High education level
- Increasingly diverse socio-economics

## *Johnson County Government . . .*

- Operating Budget: \$637 million
- FTEs: 4,099
- Departments: 38
- Agencies: 5
- Elected Offices: 2



# Sustainability



***“Choices that meet the needs of the present without compromising the ability of future generations to meet their own needs”***

**- UN Definition**

# Sustainability



*“In our every deliberation we must consider the impact of our decisions on the next seven generations.”*

**- From Great Law of the Iroquois Confederacy**

# Sustainability



***“Then I say the earth belongs to each...generation during its course, fully and in its own right, no generation can contract debts greater than may be paid during the course of its own existence.”***

**- Thomas Jefferson, Sept. 6th 1789**

# What Sustainability Isn't

- It isn't about saving the Earth. It is about saving us and our children.
- It isn't about costing more. It is about life cycle costing and financial stewardship.



# Triple Bottom Line



# Johnson County: Why Are We Promoting Sustainability?

- **Our citizens want it**
  - 2007 Citizen Survey indicates that environmental protection is among top issues citizens want us to focus on in the next two to three years
- **Imperative**
  - In the best interest of the community to be good stewards of resources (financial, human, natural)
  - To compete for the workforce of the future, sustainability is key
- **Lead by example**
- **We want to be part of the solution**



# We are in good company...



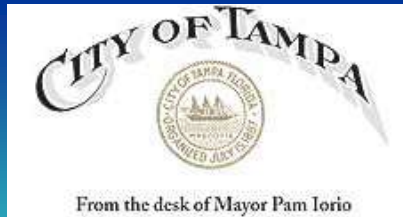
Kansas City, Missouri



City of  
**Atlanta**  
Online



Prairie Village



**More than 700 mayors from all 50 states, the District of Columbia and Puerto Rico, representing a total population of over 75,000,000 citizens, have signed the U.S. Conference of Mayors Agreement.**

# We are in good company...

## Corporate Commitments and Results



10% reduction  
\$650 million saved



69% reduction  
\$2 billion saved



10% reduction  
"It's made us  
more competitive"



5% reduction



Absolute cap



10% reduction



35% reduction  
\$200 million saved



19% reduction



6% reduction



65% reduction  
\$791 million saved



72% reduction



25% reduction  
\$100 million saved



37% reduction



13% reduction



9% reduction



17% reduction



1% reduction  
\$1.5 billion clean tech R&D



25% reduction

## This makes good business sense

# We are in good company...

The ICMA Executive Board adopted Sustainability as “the issue of our age.” In February 2007, the Board decided to make Sustainability a priority issue and directed staff to launch efforts to position ICMA as a leader on sustainability.



On July 16, 2007 at the National Association of Counties Annual Conference in Richmond, Virginia, 12 pioneering counties representing 17 million people launched “Cool Counties.”



# Johnson County's Sustainable Governance Model

- **Get own house in order first**
- **Secure & build “buy-in” from the top**
- **Identify champions & build a multi-level, multi-department team.**
- **Hire a Sustainability Director**
- **Develop an inventory (baseline) of current sustainable practices**
- **Establish Sustainability goals and objectives**



# Johnson County's Sustainable Governance Model (cont)

- Track & publicize sustainability successes
- Emphasize actions that provide multiple benefits; and emphasize the benefits that resonate with the audience (environmental, social or economic)
- Consider life-cycle costs & benefits of actions & make the business case
- Reward & recognize staff participation & positive changes
- Don't forget staff education, training & outreach. People are much more likely to act if they understand why.



# Johnson County's Sustainability Initiatives



# Sustainability Committee

- Formed in 2005
- Many Committee members have attended Sustainability Workshops



# Sustainability Committee

- **Vision – *A sustainable community of choice that respects the needs of future generations.***
- **Mission – *Lead, advocate for, and implement sustainable practices for the stewardship of Johnson County’s natural, human, and financial resources.***



# Sustainability Committee

- Alice Amrein, Transit
- Neal Angrisano, Facilities
- Beth Brandel, JCW
- Julie Coon, Environmental
- Chuck Ferguson, Transit
- Tom Franzen, OFM
- Georgia Gavito, Facilities
- Paul Greely, Planning
- Jill Jolicoeur, BFP
- Lee Kellenberger, Stormwater
- Cindy Kemper, Environmental
- Lindsey Kenkel, Facilities
- Kent Lage, Stormwater/Public Works
- Jennifer Logan, Environmental
- Bill Maasen, Park and Recreation District.
- John Mahin, OFM
- Jerry Mallory, Planning/Codes
- Mike Meadors, Park and Recreation District
- John Metzler, JCW
- Rick Miller, Extension Council
- John O'Neil, JCW
- David Peel, Planning
- Ed Peterson, BOCC
- Sarah Plinsky, CMO
- Paul Welcome, Appraiser
- Joe Waters, Facilities
- Kurt Winters, JCW



# Sustainability Committee

- **Formed work groups to focus on 4 organization-wide Sustainability initiatives:**
  - **Facilities Design, Operation and Maintenance**
  - **Waste Reduction**
  - **Green Procurement**
  - **Integration of Sustainability in County Planning and Processes**
- **Inventory of sustainable actions completed or underway**




# **Inventory of Sustainable Actions Completed or Underway**

- **Document what we already do**
- **Measure and quantify our success**
- **Develop performance measures and empower managers and leaders to make informed, data-driven decisions**



# Inventory of Sustainable Actions Completed or Underway

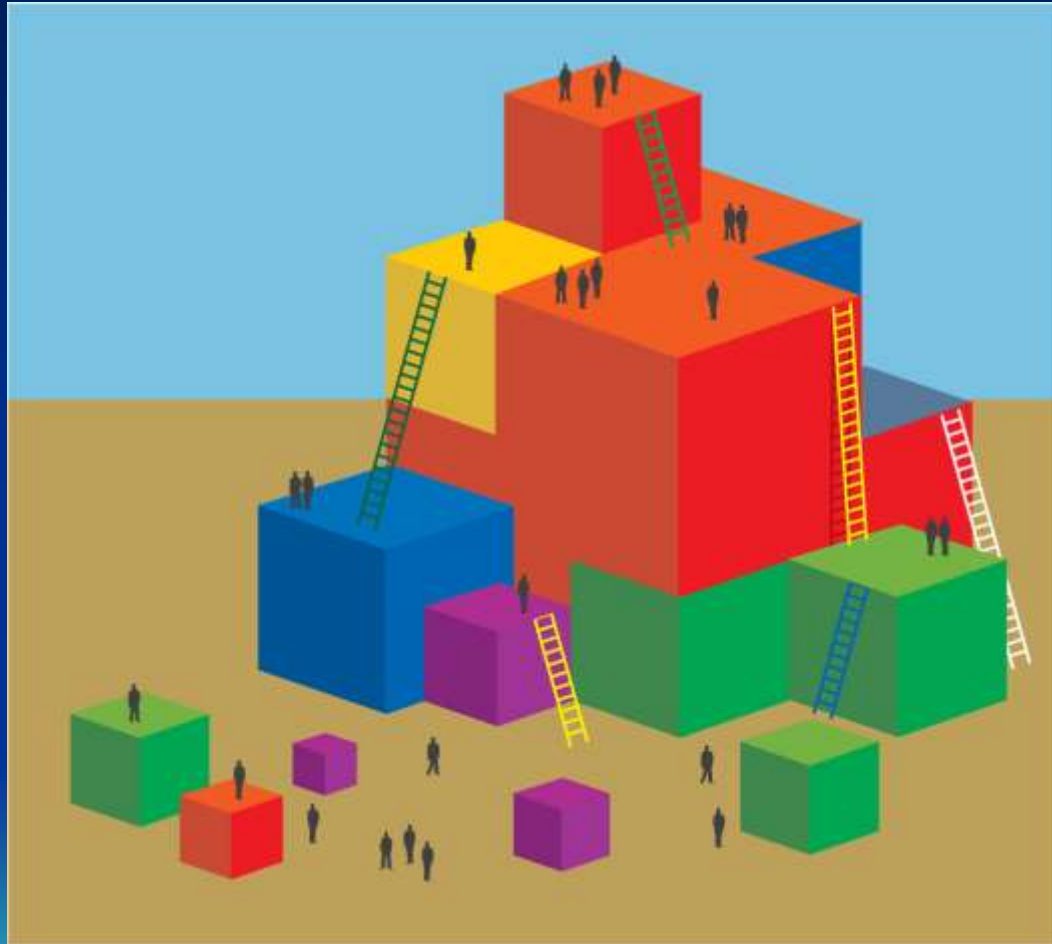
- Lighting Retrofit Project
  - Wastewater
    - Grease Traps – convert digester gas to electricity
    - Land Application of Bio-solids
  - Since 2004, eliminated 400 tons of air pollution and 800,000 vehicle miles traveled due to county employees' actions
  - Purchased 38 hybrid vehicles, saving at least \$142,000 in reduced gas consumption & reducing air pollution by 2000 tons
  - Installed vapor recovery equipment at County-owned refueling stations, reducing VOC emissions by 2/3 ton per year
- 

# Inventory of Sustainable Actions Completed or Underway (cont)

- Sponsored change-a-light campaign for employees, saving \$41,700 in electricity costs & reducing 278 tons of greenhouse gas emissions
- Built LEED-Gold office building, reducing energy use by more than 43% in the first year
- Adopted resolution to reduce greenhouse gas emissions from county government operations by 33% by 2020 & in the larger community by 80% by 2050
- Adopted new county-wide Solid Waste Plan that promotes aggressive waste reduction
- Purchased Dell computers which are all Energy Star compliant



# Sustainability Work Groups



# Facilities Design, Operation & Maintenance Work Group

- **Long Term Goal:**
  - Achieve carbon neutrality in all new and renovated county buildings by 2030
- **Short Term Goals:**
  - Update Sustainability Guidelines for Facilities Design
  - Establish Sustainability Guidelines for Operation and Maintenance for all county properties
  - Investigate potential for Sustainability audits

# Facilities Design, Operation & Maintenance Work Group

- Commission resolution to achieve carbon-neutral buildings by 2030 - adopted
- Revisions to Sustainability Guidelines for Facilities Design – coming soon



# Waste Reduction Work Group

- **Long Term Goal:**
  - Eliminate waste for disposal from county government operations by 2020
- **Short Term Goals:**
  - Reduce paper use & increase paper recycling
  - Expand recycling infrastructure in county buildings
  - Perform departmental waste audits
  - Deliver waste reduction & recycling education to employees

# Waste Reduction Work Group

- Inventory current paper usage & paper recycling practices - done
- Roll out Paper Reduction Campaign to all departments with implementation tools - done
- Share waste reduction “best practices” with departments - ongoing
- New, expanded recycling contract – coming soon



# Green Procurement Work Group

- **Long Term Goals:**
  - **Contribute to County goal of 100% sustainability**
  - **Incorporate sustainability into everything we purchase**
  - **Leverage purchase power with vendor community to expand sustainability**
  
- **Short Term Goals:**
  - **Purchase with long term goal of zero waste in mind**
  - **Work in 5-year increments toward 25-year goal of 100% sustainability**
  - **Develop an Environmentally Preferable Purchasing Guide for county users**
  - **Johnson County has the ability to impact the vendor community because of the investments we make.**
  - **We can make an impact by harnessing our buying power.**



# Green Procurement Work Group

- Develop new, competitively priced contracts for post-consumer recycled content paper - done
- Conduct Green Procurement “lunch & learn” webinars for staff - done
- Hold a Green Vendor fair to showcase sustainable products - done
- Develop Environmentally Preferable Purchasing Guidelines – coming soon
- Include green preference language in IFBs and RFPs – done
- Participate in regional green purchasing initiative – coming soon



# Integration Work Group

- **Long Term Goal:**
  - To incorporate sustainability into all county processes, policies and practices (Budget, CIP, Facilities Master Plan, State of County Services reports, Staff Performance Management, etc.)
- **Short Term Goals:**
  - Inventory current sustainability practices, identify gaps, then develop short-term projects to fill gaps
  - Broaden Commission's Strategic Goals to include stewardship of natural resources
  - Develop models & best practices to support sustainability in decision-making (such as life-cycle costing)
  - Develop sustainability revolving fund
  - Expand sustainable project delivery methods (design/build)
  - Convene a community-wide Sustainability Task Force
  - Expand staff capacity to support sustainability work (Sustainability Director . . . Sustainability Department)

# Integration Work Group

- Develop vision, mission statements for Sustainability Committee - done
- Add sustainability as a question in CIP project evaluation process - done
- Inventory current sustainability practices & share results - done
- Inventory Greenhouse Gas Emissions from County Operations – coming soon



# Common Challenges for Work Groups



- **Competing priorities & workloads**
- **Maintaining momentum over time**
- **Need for specified knowledge – some requiring consulting help**
- **Decentralized structure**
- **Tapping into same people for multiple tasks**

# Organizational Culture Change

- **Success occurs one action and one person at a time.**
- **We need to create an environment that empowers individual innovation.**
- **This will change how we deliver services.**
- **This is not a new program; it is integrated into everything we do and every decision we make.**



# Keys to Success

- **Political support**
  - Different elected officials respond differently
- **Citizen involvement**
- **Take advantage of the “hype”**
- **Train your staff**



# Next Steps

- **Inventory is Complete**
  - Establish the best practices as standards
  - Dig deeper for improvements
- **Sub Groups yield both recommendations and actions**
- **Policy actions brought to the Commission**
- **Walk the talk – incorporate sustainable practices into daily business**



**"We do not inherit the earth  
from our ancestors; we  
borrow it from our  
children"**

**- Chief Seattle**





**Sarah Plinsky** [sarah.plinsky@jocogov.org](mailto:sarah.plinsky@jocogov.org) (913) 715-0738

**Cindy Kemper** [cindy.kemper@jocogov.org](mailto:cindy.kemper@jocogov.org) (913) 715-6901

Go to [www.jocogov.org](http://www.jocogov.org) and click on **Living Green in Johnson County** for more information!